

MODEL: *Smoke* Master **PRO**

www.lensgo.net

Product Introduction

A portable, three-speed smoke machine with dry burn protection, ideal for outdoor use. Users can create high-quality, film-grade mist that is odourless, disperses quickly, and has twice the suspension time of a typical mist machine. This solves the problem of film producers, photographers, and short video creators who need to create mist in outdoor shooting scenarios where traditional mist machines are ineffective.

Product Features

- **5600 mAh high-capacity battery**
Approximately 110 minutes of use (minimum power 40 W)
- **Built-in oil level detection**
Convenient for immediate refilling when the oil level is low, with intelligent dry burn protection to ensure safe operation.
- **Adjustable smoke density**
Three adjustable smoke settings: 40W / 70W / 100W. No preheating required. Instantly produces thick smoke.
- **Ergonomic handle design**
Easy to hold, lightweight, convenient to carry for outdoor shooting

Turn off after use

Do not spray your eyes

Do not touch the oil tank while working

A smoke alarm may be triggered

Do not smoke

No children allowed!

Parameters

- MODEL:** Smoke Master pro
- POWER:** 40W / 70W / 100W
- voltage:** 14.8V
- charging voltage:** TYPE - C, max 65W, min 5V3A MIX Compatible with higher-power chargers, charging time remains unchanged
- battery capacity:** 18650x8, 5600MAH
- usage time:** Maximum power 100W approx. 40 minutes, minimum power 40W approx. 110 minutes
- charging time:** 60W fast charging takes approximately 2.5 hours (requires a charger rated at 40W or higher)
- oil tank capacity:** 85ML
- LIQUID composition:** VG (vegetable glycerin) + PG (propylene glycol)
- Smoke output:** The amount of smoke produced by Smoke Master PRO in 1 minute can cover 20 CBM. (Minimum power 40W)
- SIZE:** 267 ×123 ×111MM
- NET WEIGHT:** About1235g (without oil)

List of accessories

fog machine

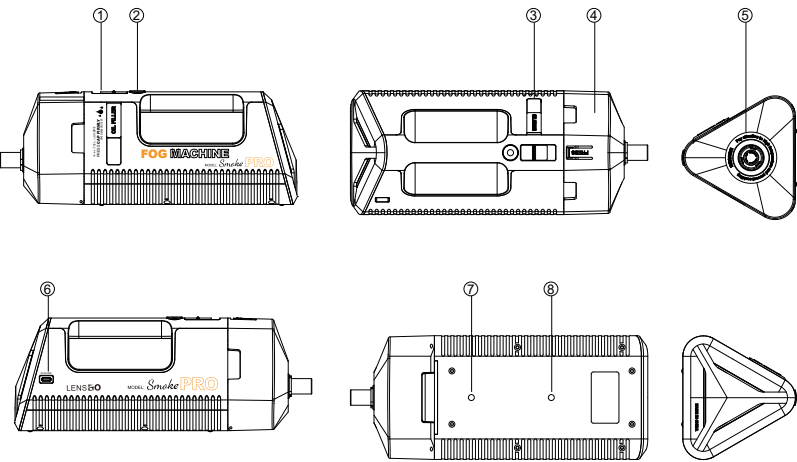
silicone hose

liquid smoke filter

Fog Machine Fluid

Infrared remote control

Product view



- ① Adjust the power setting to 40W - 70W - 100W.
Just push gently.

② Double-click to open smoke
Gently press

③ Fuel filler neck
Open the silicone plug, add oil, and press the silicone plug firmly after completion.

④ Waste oil disposal hole
Dispose of excess waste oil

⑤ Smoke outlet hole
Do not spray smoke towards the eyes.

⑥ TYPE-C charging port
Maximum 65W MAX, minimum 5V3A MIX, charging time: Approximately 2.5 hours with 60W fast charging (requires a charger rated at 40W or higher)

⑦ 1/4 screw hole
Expandable mounting bracket

⑧ 1/4 screw hole
Expandable mounting bracket

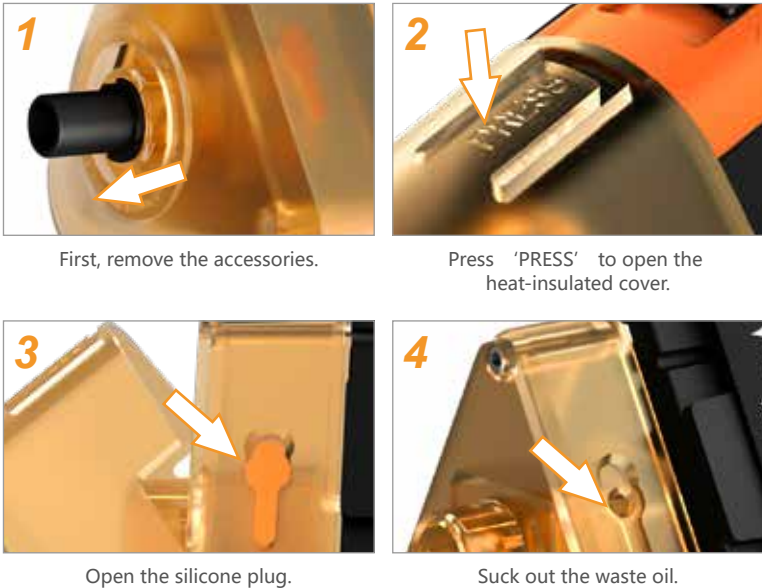
Oil tank description



When the machine is turned on and oil is added, it will automatically run to draw oil into the oil-absorbing cotton. There will be excess oil coming out. The oil extraction hole is used to draw oil from the oil bottle and remove waste oil, which can then be added back into the oil bottle for continued use (it is recommended to dispose of waste oil that has been stored for a long time).

Oil tank description

When disposing of waste oil, first remove the accessories, then press the top of the heat-insulated cover marked 'perss' to open it. After opening the heat-insulated cover, suck out the waste oil (be sure to operate after the machine has cooled down to avoid burning your hands on the oil tank).



Fueling steps



Open the fuel cap.



Fill the fuel tank through the fuel filler neck.
After filling, press the fuel cap firmly into place.

After refuelling, wait for about two minutes to allow any compressed air bubbles to dissipate, then replace the cap to prevent interference with the fuel level sensor.

⚠ WARNING

When the machine continuously produces smoke, the body and oil tank will become hot, which is normal. Direct contact with the skin may cause burns. Be sure to install an insulation cover
When used continuously, the machine may spray oil. This is normal. We recommend using the accompanying accessories to prevent the oil mist from spraying out and burning your hands.

⚠ WARNING

If abnormal noises occur during use, the machine will automatically detect the oil level and prompt that the oil tank is low on oil. Please refuel as soon as possible.

开 / 关机



⚠ WARNING

New batteries have low power levels. For transport safety reasons, batteries are shipped with only about 20% of their power remaining and must be charged before use.

Q1: WHY DOES THE DRY ICE EFFECT LEAVE A LAYER OF OIL ON THE SURFACE?

A: because the dry ice effect outputs a high concentration of aerosols, the dissipation mechanism is different from the normal infinite dilution by air convection, which is gradual deposition, so it will return to the liquid state. After each shot, the dry ice can be blown away and sprayed again, reduce the "Dry ice" on the surface of the time, you can avoid the oil on the surface of the matter can be avoided, can also be wiped clean with a wet paper towel

Q2: WHY IS THE MACHINE VERY HOT DURING USE?

A: When the machine produces smoke continuously, the temperature of the fuselage and the oil tank will be higher, which is a normal phenomenon. Remember not to touch the oil tank directly with your hands to prevent scalding, when you feel very hot, you can shut down for a few minutes, and then use it again

Q3: CAN I OPEN IT IMMEDIATELY WHEN I RECEIVE IT?

A: Can be used to boot, no other complex setup steps are required, but for shipping Safe, the new battery is low, only about 20% of the battery when shipped, need to be recharged before use

Q4: WHY DOES MY FOG MACHINE SQUIRT OIL WHEN IT'S RUNNING?

A: This means that the oil tank atomization components were soaked in oil, which is not necessarily the oil tank damage, may be silicone cover is not tight, the oil tank is not sealed, may also occur after continuous high temperature

TREATMENT: Place a tissue on the table, then remove the oil tank and place it upside down on the tissue for 1 minute (pay attention to prevent the oil tank rolling and breaking) , let the excess oil flow out, then upside down gently knock a few times to remove the excess oil. Then reinstall the machine

Q5: ARE YOUR SMOKE GO SAFE? ARE THEY HARMFUL TO YOUR HEALTH?

A: VG (vegetable glycerin) + PG (propanediol) is an environmentally friendly, safe, odor-free, non-toxic and non-harmful ingredient that has no adverse health effects and can be safely used, but remember not to smoke directly! Although our ingredients are safe, they are not suitable for direct ingestion and high temperatures can cause burns

Q6: WILL THE SMOKE SET OFF THE SMOKE ALARM?

A: After the feedback from users, there is no Smoke Master PRO Smoke triggered the Smoke alarm, but do not rule out the use of other places will trigger the Smoke alarm sensor, so use as far as possible away from the smoke alarm places

Q7: DOES THE OIL GO BAD?

A: The deterioration principle is that the fume oil is water-absorbent. The fume oil is exposed to the air for a long time and will constantly absorb the moisture in the air. A small amount of air in the oil tank will not cause deterioration. Therefore, please cover the silicone cover as soon as possible after refueling, avoid long-term exposure to soot in the air

Q8: WHAT ABOUT THE HEAT?

A: Oil tank continuous smoke, try to ensure that the oil is not too low, so the oil tank will be more durable, if the oil is too low, oil tank temperature will rise quickly

Q9: WHAT IS THE WARRANTY

A: A one-year warranty applies to all users who purchase through our authorised dealers. The warranty covers faults caused by manufacturing defects and faults that occur during normal use. It does not cover faults caused by fire, water damage, physical damage, or operations that are expressly prohibited in the operating manual. The fuel tank is a consumable item and is not covered by the warranty.



SECURITY ALERT

WE TRY OUR BEST TO MAKE SMOKE GO SAFE FOR USERS, BUT HIGH-POWER LITHIUM-ION BATTERY AND HIGH TEMPERATURE DURING OPERATION HAVE SOME SECURITY RISKS. THEREFORE, THE USER MUST BE CLEAR ABOUT THE FOLLOWING SAFETY PRECAUTIONS TO PREVENT PERSONAL, PROPERTY LOSSES

THE USE OF OIL TANKS WITHOUT OIL IS STRICTLY PROHIBITED:

Every time before use must check the oil tank, when the oil is below the scale to form the habit of adding oil, to avoid dry burning machine

IT IS STRICTLY FORBIDDEN TO SPRAY SMOKE DIRECTLY ON THE SKIN, EYES AND OTHER PARTS OF THE HUMAN BODY:

When the machine is running for a long time, a small amount of high-temperature oil droplets in the smoke directly ejected from the body and the nozzle should be kept at a certain distance to prevent burns

DO NOT TOUCH THE OIL TANK DURING USE:

After continuous smoke output, the oil tank temperature is very high, please install heat insulation cover for protection

DO NOT OPERATE THE MACHINE NEAR FLAMMABLE, COMBUSTIBLE OR HEAT - SENSITIVE MATERIALS

Batteries

For transport safety, the battery is only about 20% charged when shipped. Before using it for the first time, you need to charge the machine with the charging cable. Each charge takes approximately 2.5 hours (60W fast charging), and the system will automatically stop charging when fully charged.



- BLUE LIGHT FLASHING
Charging, low battery
- BLUE LIGHT STEADY
Fully charged

IT IS STRICTLY FORBIDDEN TO POINT A PUFF OF SMOKE AT THE SOURCE OF THE FIRE:

For example, open flame or Spark, please keep a certain distance

DON'T SMOKE DIRECTLY:

Although our formula is safe, it is not suitable for direct inhalation (Cannot be used as electronic cigarette) and high temperatures can cause burns, and direct ingestion of high concentrations of aerosols is dangerous

DON'T LET CHILDREN USE SMOKE GO:

Although our product is user-friendly, Smoke GO is not a toy and can be a health risk to children and a fire hazard if handled improperly

The images in the manual are renderings. The actual product may vary slightly in structure. Please refer to the physical product.

! WARNING

- / Users must read all the warnings and safety precautions in this manual and take good care of this manual
- / Los usuarios deben leer todas las advertencias y precauciones de seguridad de este manual y cuidarlo con esmero.
- / Os utilizadores devem ler todos os avisos e precauções de segurança contidos neste manual e cuidar bem dele
- / 使用者は、本取扱説明書に記載されているすべての警告と安全上の注意を読み、本取扱説明書を大切に扱わなければなりません。

映画用霧発生機

FOG MACHINE
MODEL: *Smoke* Master PRO

! WARNING

- **INGESTION HAZARD:** This product contains a button cell or coin battery.
- **DEATH** or serious injury can occur if ingested.
- A swallowed button cell or coin battery can cause **Internal Chemical Burns** in as little as **2 hours**.
- **KEEP** new and used batteries **OUT OF REACH of CHILDREN**.
- **Seek immediate medical attention** if a battery is suspected to be swallowed or inserted inside any part of the body.



- a) Remove and immediately recycle or dispose of used batteries according to local regulations and keep away from children. Do NOT dispose of batteries in household trash or incinerate.
- b) Even used batteries may cause severe injury or death.
- c) Call a local poison control center for treatment information.
- d) The compatible battery type (e.g., LR44, CR2032).
- e) The nominal battery voltage
- f) Non-rechargeable batteries are not to be recharged.
- g) Do not force discharge, recharge, disassemble, heat above or incinerate. Doing so may result in injury due to venting, leakage orexplosion resulting in chemical burns.